

NOTE: This kit is not to be used as a replacement seat. It is not safe for passengers to ride on the panel.

Seat Removal:

1. Remove lower seat cushion by pushing the release lever under the front edge of the cushion on each side.
2. Remove 3 bolts holding the back seat section in place. 1 at the center bracket, and 1 at each corner as indicated by the arrows in the photo. Also remove the lower seatbelt connectors. →



3. ← Fold the seat backs down. There is one more nut to remove at each side near the side panels. Remove the seat backs from the car.

OPTIONAL SEAT BELT REMOVAL.

You may choose to leave the seatbelts in the car or remove them.

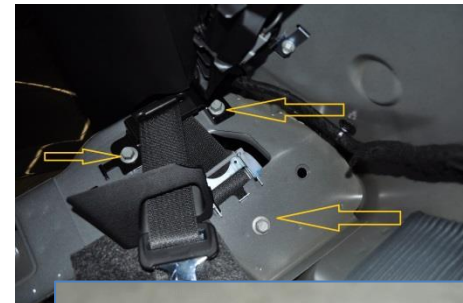
4. The rear seatbelts have a plastic cover built into the seatbelt assembly. Pop off this cover and let it dangle with the seatbelt for now. You will be removing this plastic piece in a later step. →



5. ← Remove the rear side panels by firmly pulling away from the body of the car to release the plastic clips holding it in place. This may take more force than you think is comfortable, but just pull firmly around the edges and each one will release. Temporarily remove both of them from the car.



6. → You now have access to the 3 bolts holding the seatbelt mechanisms. Remove



these 3 bolts on each side and pull the mechanism out of the hole. →

7. Remove the lower Torx bolts holding the seatbelt straps to the floor. You can now remove the seatbelts from the car.
8. You will need to reuse the plastic trim piece attached to your seatbelt mechanism to install back onto the car for a finished look. Using a SHARP utility knife blade, slit the plastic in the smallest corner to allow the seatbelt strap to slide out of the trim piece (see photo). Cut AWAY from your body to avoid cutting yourself.



If you do this right, you should have a very clean cut that will be unnoticeable when reinstalled to the car. This method allows you to reassemble the seatbelt mechanism if you want to uninstall the kit in the future.

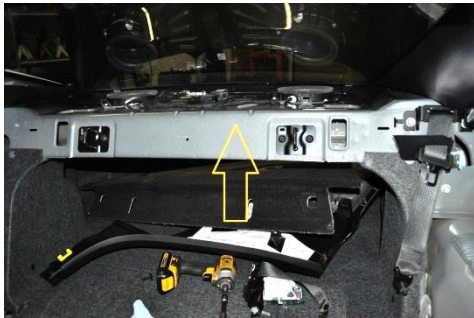
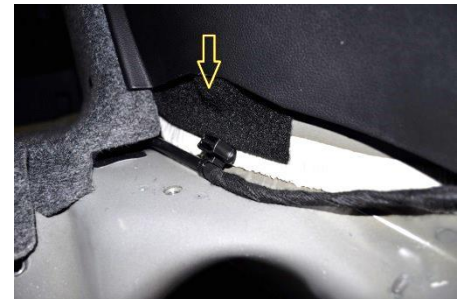


9. Remove the two bolts holding each of the two black metal brackets used for the child seat mounting points. Plug the holes by reinstalling the bolts here. →



10. ← On the driver side under the side panel, is a wiring harness with a black clip attached to a post. Remove this plastic clip from the post and let the wire hang down.

11. Included in your kit are 2 small pieces of black material to cover this area on each side, as the rear seat delete panels will not cover this spot. Place the material as shown, halfway behind the side panel. →



12. ← With the side panels gone, you can temporarily remove the factory carpeted rear deck panel. This will be reinstalled in a later step.



13. Remove the 2 black metal hooks. You will need a T40 Torx socket for this step. →

14. Reinstall the Rear Deck panel removed in step 12. It will need a slight modification. Using your utility knife, cut away a small amount of material as shown in the photo to allow access to the small bolt hole. Do this for each side. →



15. Reinstall the left and right factory side panels back in the car. Push firmly on the panel to seat the clips.



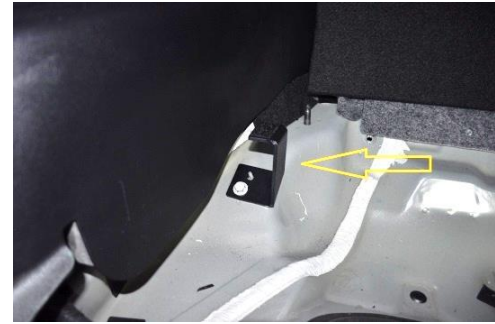
Installation of Rear Seat Delete



1. ← Install the flat center brace over the transmission tunnel using the two fat plastic push pins included in the hardware kit. One push pin goes in the **threaded hole** near the back. The other pin **with tape**, goes in the front hole. The tape is there to make a tighter fit. You can add or remove tape to get the desired fit.

2. → Install the Left and Right support brackets in the previous seatbelt

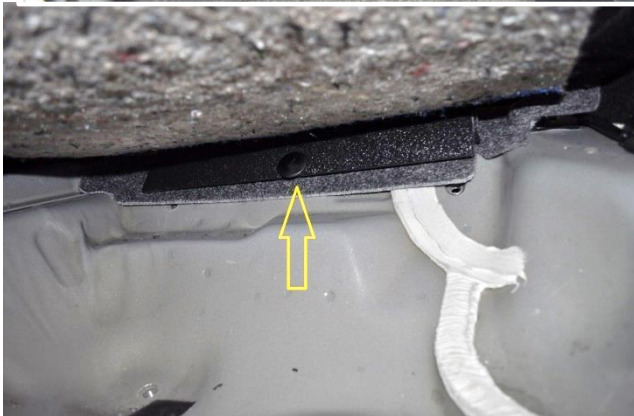
lower connection point, as shown. Use the included **M10x1.50 bolts** and washers to secure the brackets. Make sure the alignment dowel beside the bolt hole, goes into the alignment hole of the bracket for proper location. →



3. ← Install the lower panels in the car. Push the 4 push pins through each of the lower panels in the pre-drilled holes, into the flat support brace underneath. NOTE: For best results, you may have to use one hand under the panel to lift up the support brace as you push the pin through from the top, to get the pin completely flush.

4. ← At the back of the lower panels there is a notch built-in to sit on top of a threaded stud that protrudes from the body of the car. There is a factory black plastic cover over this stud. The new lower panel should go **BEHIND** this plastic stud cover to help hold it in place.

NOTE: It is common for this factory plastic stud cover to wear out and not stay in place. It is not required for the rear seat delete installation, but helps hold the panel more securely.



5. → Install the plastic

trim piece removed from the seatbelt assembly in Step 8. This piece just snaps back into the original location.

6. → Install the Upper panel of the rear seat delete by pushing the included push pins through the upper panel, into the threaded holes in the body. (These are the holes that you exposed in step 14 above.)

7. **Optional Mounting Hardware:**

Also included are two M6x1.0 mounting bolts if you choose to mount the back panel more securely instead of the removable push pins. This will make it more difficult to access the trunk quickly, but will be more secure.

8. **TIP:** To preserve your factory seats, you can reuse the plastic bags from the packaging that your RSD came in.

